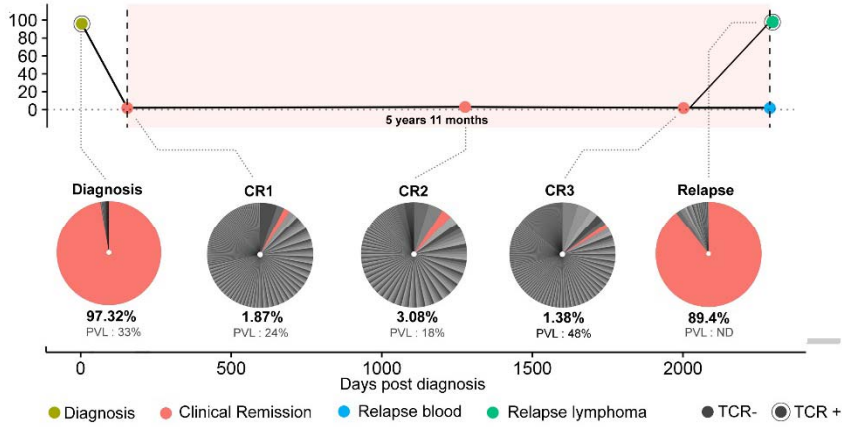


# Responder

Complete remission (CR) ~ 6 years

Viral ID-card (red slice in pie) is dominant at diagnosis (D), decreases during remission (CR1 to CR3, tiny slice), remains minor over 6 years, then increases at relapse (R)



# Refractory

Complete remission (CR) ~ 3 to 5 months

Viral ID-card (red slice in pie) is dominant at diagnosis (D), remains dominant during remission (large slices), and returns to >100 % at relapse (R)

